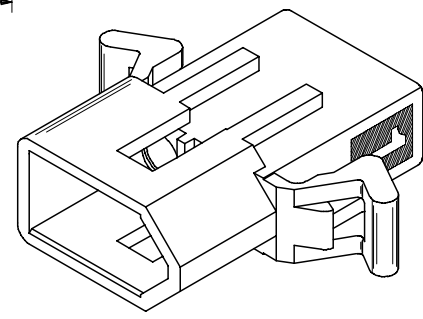
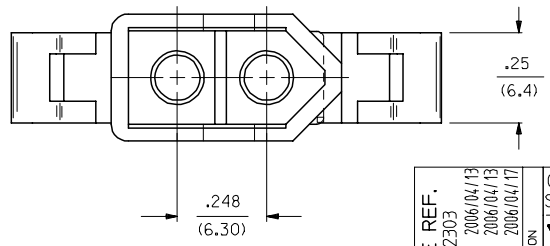
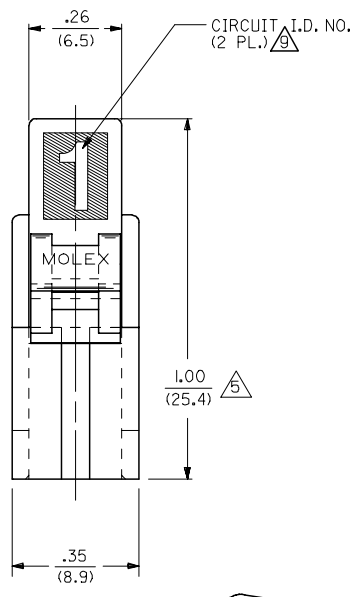
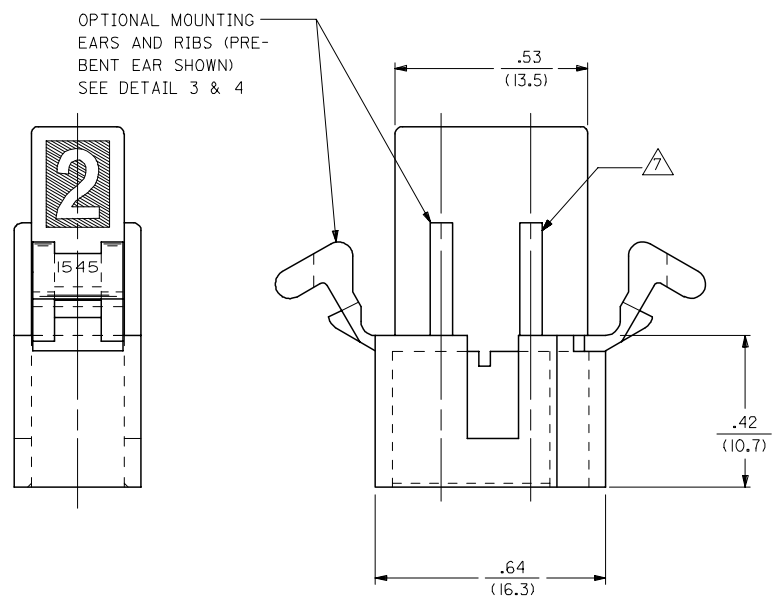
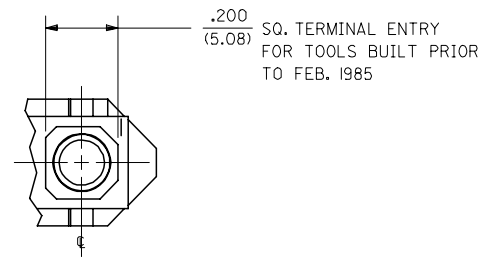
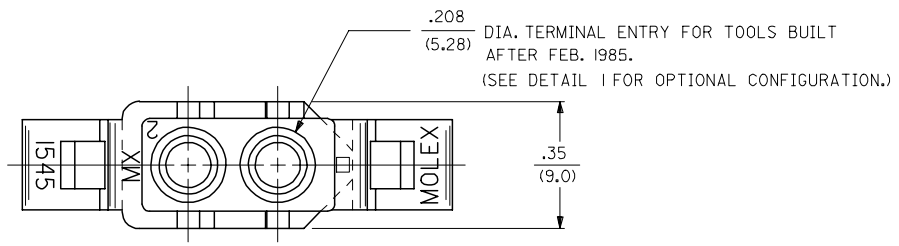


13 12 11 10 9 8 7 6 5 4 3 2 1

J
I
H
G
F
E
D
C
B
A

J
I
H
G
F
E
D
C
B
A



| | | | | | | | | | | | |
|--|-------------------------------|--|---------|--------------------------|----------------|---|----------------------|------------------------|--|--|--|
| UPDATE NOTE REF. FC NO: UCP2006-2303 DRAWN/PRI/DOR 2006/04/13 CHKD: AEL/HAG 2006/04/13 APPR: FSM/TH 2006/04/17 | QUALITY SYMBOLS ▽=0 ▽=0 | GENERAL TOLERANCES (UNLESS SPECIFIED) | | DIMENSION STYLE IN/MM | | SCALE 4:1 | DESIGN UNITS INCH | THIRD ANGLE PROJECTION | | | |
| | | 4 PLACES ± --- ± --- | mm INCH | DRAWN BY GEP | DATE 8/9/88 | TITLE .093/(2.36) HOUSING, PLUG & RECEPTACLE, 2 CKT., .248/(6.30) CTR. | | | | | |
| | | 3 PLACES ± --- ± .010 | ± .010 | CHECKED BY RW | DATE 8/9/88 | MATERIAL NO. SD-1545-* | | | | | |
| | | 2 PLACES ± 0.25 ± .014 | ± .014 | APPROVED BY RAS | DATE 8/9/88 | DOCUMENT NO. SD-1545-* | | | | | |
| 1 PLACE ± 0.35 ± --- | ± --- | ANGULAR ±1/2° | | SEE CHART | | SHEET NO. 1 OF 3 | | MOLEX INCORPORATED | | | |
| DRAFT WHERE APPLICABLE MUST REMAIN WITHIN DIMENSIONS | | THIS DRAWING CONTAINS INFORMATION THAT IS PROPRIETARY TO MOLEX AND SHOULD NOT BE USED WITHOUT WRITTEN PERMISSION | | | | | | | | | |

12 11 10 9 8 7 6 5 4 3 2 1

PLUG

| PART NO. | ENG. NO. |
|------------|-----------|
| 03-09-2021 | I545-P |
| 03-09-2022 | I545-P1 |
| 03-09-7021 | I545-PBK |
| 03-09-7022 | I545-PIBK |
| 03-09-2023 | I545-P2 |
| 03-09-7024 | I545-PIRD |
| 03-09-7023 | I545-PIBU |
| 50-36-1686 | I545-P1-1 |

RECEPTACLE

| PART NO. | ENG. NO. |
|------------|-----------|
| 03-09-6021 | I545-R3BK |
| 03-09-6023 | I545-R3RD |
| 03-09-6024 | I545-R3BU |
| 03-09-1022 | I545-R1 |
| 03-09-1023 | I545-R2 |
| 03-09-6025 | I545-RIBU |
| 03-09-1027 | I545-R3 |
| 50-36-1685 | I545-R1-1 |

LEGEND : PLUG

1545-P***-*

OPTIONS: _____

BLANK = WITH STD. EARS
 1 = WITHOUT EARS
 2 = WITH PREBENT EARS

COLOR: BLANK=NATURAL COLOR
 AM=AMBER BK=BLACK BU=BLUE
 BN=BROWN CY=GRAY GN=GREEN
 OR=ORANGE RD=RED YW=YELLOW

BLANK = MATERIAL CODE A
 1 = MATERIAL CODE B

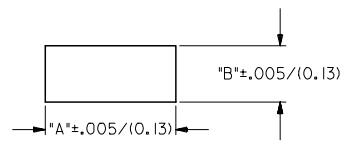
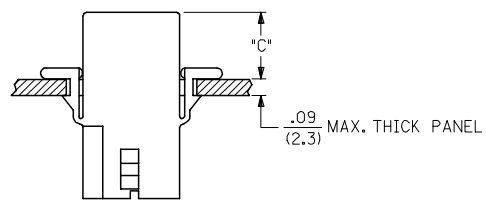
LEGEND : RECEPTACLE

1545-R***-*

BLANK = WITH STD. EARS & RAMPS
 1 = WITHOUT EARS, WITH RAMPS
 2 = WITHOUT EARS, WITHOUT RAMPS
 3 = WITH PREBENT EARS & RAMPS

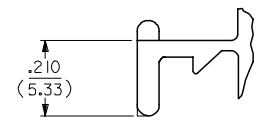
COLOR: BLANK=NATURAL COLOR
 AM=AMBER BK=BLACK BU=BLUE
 BN=BROWN CY=GRAY GN=GREEN
 OR=ORANGE RD=RED YW=YELLOW

BLANK = MATERIAL CODE A
 1 = MATERIAL CODE B



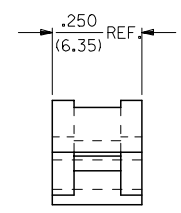
RECOMMENDED PANEL OPENING
(SCALE 2:1)

| HOUSING | DIM. "A" | DIM. "B" | DIM. "C" (PREBENT) | DIM. "C" (STD. EAR) |
|------------|--------------|-------------|--------------------|---------------------|
| PLUG | .800/(20.32) | .375/(9.53) | .40/(10.2) | .39/(9.9) |
| RECEPTACLE | .725/(18.42) | .312/(7.92) | .41/(10.4) | .40/(10.2) |



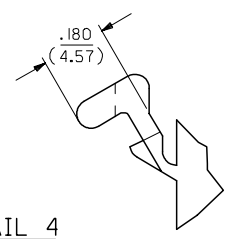
DETAIL 3

.093/(2.36) STANDARD MOUNTING EAR
(SCALE 4:1)



DETAIL 4

.093/(2.36) PREBENT MOUNTING EAR
(SCALE 4:1)



NOTES:

- MATERIAL: - A = NYLON, PA66, 94V-2, COLOR: SEE LEGEND.
 B = UL94V-0, PA6 NYLON, IEC 60335-1, 4TH EDITION
 GLOW WIRE CAPABLE.
- FINISH: NONE.
- PRODUCT SPECIFICATION: PS-02-09.
- PACKAGING INFORMATION: PK-1545-001
- .97/(24.6) REF. FOR TOOLS BUILT PRIOR TO FEB. 1985.
- 1.00/(25.4) REF. FOR TOOLS BUILT PRIOR TO FEB. 1985.
- RIBS ARE PRESENT ONLY ON PARTS WITH MOUNTING EARS.
- EACH TERMINAL POCKET WILL ACCEPT UP TO:
 (2) #18 AWG WIRES HAVING 1/32" THK. INSULATION OR
 (1) #16 AWG WIRE HAVING 1/16" THK. INSULATION OR
 (1) #16 AWG & (1) #18 AWG WIRE HAVING 1/32" THK. INSULATION .
- CIRCUIT I.D. NUMBERS ON SIDE OF HOUSING APPEAR ON PARTS FROM TOOLS BUILT AFTER 11/25/91.
- PARTS CONFORM TO CLASS 'B' REQUIREMENTS OF COSMETIC SPECIFICATION PS-45499-002 EXCEPT MATERIAL OPTION 'B' MEETS CLASS 'C' REQUIREMENTS FOR SINK AND DISCOLORATION.

| | | | | | | | | | | | |
|--|-------------------------------|---------------------------------------|--|-----------------|--|--|--------------|---|--|--|--|
| ADD MAT'L & P/N'S EC NO: UCP2007-2366 DRWNAELHAG 2007/05/25 CHKD:LSHMDT 2007/06/01 APPR:FSM TH 2007/06/04 REW | QUALITY SYMBOLS ▽=0 ▽=0 | GENERAL TOLERANCES (UNLESS SPECIFIED) | | DIMENSION STYLE | | SCALE | DESIGN UNITS | THIRD ANGLE PROJECTION | | | |
| | | | | IN/MM | | 2:1 | INCH | | | | |
| | | 4 PLACES ± --- ± --- | | DRAWN BY | | DATE | | .093/(2.36) HOUSING, PLUG & RECEPTACLE, 2 CKT., .248/(6.30) CTR. MOLEX INCORPORATED | | | |
| | | 3 PLACES ± --- ± .010 | | GEP | | 8/9/88 | | | | | |
| 2 PLACES ± 0.25 ± .014 | | CHECKED BY | | DATE | | MATERIAL NO. SD-1545-* DOCUMENT NO. SHEET NO. 3 OF 3 | | | | | |
| 1 PLACE ± 0.35 ± --- | | RW | | 8/9/88 | | | | | | | |
| ANGULAR ± 1 ° | | APPROVED BY | | DATE | | THIS DRAWING CONTAINS INFORMATION THAT IS PROPRIETARY TO MOLEX INCORPORATED AND SHOULD NOT BE USED WITHOUT WRITTEN PERMISSION | | | | | |
| DRAFT WHERE APPLICABLE MUST REMAIN WITHIN DIMENSIONS | | RAS | | 8/9/88 | | | | | | | |